

FREE

METRO

Your regular **METRO** packed with news, sport and features

INSIDE»

SPECTATOR GUIDE



MIXED RELAY
CUP 2017
NOTTINGHAM



TRIATHLON HITS NOTTINGHAM

Saturday 2 September 2017 14:30
Free to watch on Victoria Embankment



TRIATHLON MIXED RELAY HITS NOTTINGHAM

LIVE ELITE ACTION FROM 14:30 ON VICTORIA EMBANKMENT, TRENT BRIDGE

WHAT'S ON?

The British Triathlon Mixed Relay Cup 2017 Nottingham arrives in the city this Saturday 2nd September and will feature top British and international elite triathletes racing around the city's Victoria Embankment and Trent Bridge.

The event will also host the City of Nottingham Triathlon from 9am offering newcomers the chance to take on the triathlon challenge and celebrate on the same finish line as the world's best.

If you love sport or want to have a fun day out for all the family, get yourself down the Victoria Embankment and be inspired by free-to-view world-class triathlon action.

TRIATHLON MIXED RELAY IN BRIEF

- Each team is made up of two men and two women.
- Each triathlete completes a 300m swim, 7.5km bike and 1.5km run before tagging their teammate in the changeover zone.
- The Changeover Zone is where the action happens.
- Introduced by the International Triathlon Union in 2009, triathlon mixed relay is a new format of the sport.
- The Glasgow 2014 Commonwealth Games was the first inclusion of triathlon mixed relay in a major games - Team England won.
- Triathlon mixed relay has been officially accepted into the Olympic programme. It will debut at the Tokyo 2020 Olympic Games.

CITY OF NOTTINGHAM TRIATHLON AT A GLANCE

- Hundreds of first-time triathletes taking part
- Experience closed roads racing alongside the River Trent on Nottingham's famous Victoria Embankment.
- Finish the event by crossing the official British Triathlon Mixed Relay Cup 2017 Nottingham finish line.
- GO TRI event: 200m pool swim, 6km bike and 1.5km run.
- Super sprint and relay: 300m pool swim, 12km bike and 3km run.

SCHEDULE

09:00	Spectator Village Opens	Meadows Recreation Ground
09:00	City of Nottingham Triathlon start	Portland Leisure Centre
09:40	Expect first finisher City of Nottingham Triathlon	Stadium
12:30	Expect last finisher City of Nottingham Triathlon	Stadium
12:30	Ticketed grandstand open	Stadium
14:30	British Triathlon Mixed Relay Cup 2017 Nottingham - Elite race start	River Trent
15:50	Expect first finisher	Stadium
16:05	Medal Ceremonies	Stadium

Fuka Segga Photo Credits © Satoshi Takasaki/JTU

[f](#) BritishTriathlon [t](#) @BritTri [i](#) @brittri [globe](#) www.britishtriathlon.org

BEST PLACES TO WATCH

The event is tailored to create a brilliant spectator experience for both the novice and elite races. With many free-to-view spots around the course, there are some great places to watch the action unfold, with some sections of the course passed by athletes over 20 times during the race.

WATCHING ALONG THE ROUTE

Riverside

The world's best will swim four times in the River Trent, making the riverside one of the best places to watch.

Stadium to Nottingham Brewhouse & Kitchen

The bike and run routes pass this stretch of course and give fans the chance to get up close and personal with the world's best triathletes.

County Hall Riverside

Watch the swim opposite the stadium area and then enjoy the final leg of the race as triathletes run over Trent Bridge and all the way past County Hall to the suspension bridge, providing another front row view of the action.

Wilford Grove/ Embankment

The bike route at Wilford Grove will see the athletes pass by spectators 24 times. Close to the Spectator Village, it's perfect to watch with all the family.

FREE TO VIEW

Event Stadium

The grandstand is ticketed for the British Triathlon Mixed Relay Cup 2017 Nottingham, however for the City of Nottingham Triathlon, friends and family who wish to cheer their loved ones cross the same finish line as the elite, can enjoy the prime viewing spot in front of the big screen from 9am until 12:30.

Spectator Village

The Spectator Village is the beating heart of the event featuring FREE family sports activities for all the family. Relax and watch the action unfold in front of the big screen and watch your friends and family cross the finish line in the City of Nottingham Triathlon. Once the elite action begins, sit back and enjoy the British Triathlon Mixed Relay Cup 2017 Nottingham.

There will also range of companies showcasing their products, offering plenty of try before you buy opportunities and freebies.

PARKING AND TRAVEL ADVICE

Getting to Victoria Embankment

Victoria Embankment is located only 1 mile from Nottingham City Centre, and next to The Meadows and West Bridgford.

Planning your visit:

Getting to Victoria Embankment is simple with plenty of public transport options and a free bike park will be available.

Nottingham City Transport - www.nctx.co.uk

Trent Barton Buses - www.trentbarton.co.uk

The Tram - www.thetram.net

Travelling by car

Limited car parking will be available on site, fees of £5 per car will be applied. Limited blue badge parking will be available on site, follow the signs for the main car park and then pick up the signs for blue badge parking.

Traffic in the area is likely to be very busy, so please allow extra travel time if travelling by car.



#MIXEDRELAYCUP

SEVENTEEN ELITE TRIATHLON TEAMS

The elite line-up welcomes teams from British Triathlon's Performance Centres as well as leading International teams.

Australia

Jessica Claxton
Lorcan Redmond
Jaz Hedgeland
Matt Hauser

Bath

Megan McDonald
Elle Twentymann
Alex Chantler Mayne
Will Crudgington

Canada

Paula Findlay
Joanna Brown
Matthew Sharpe
Jeremy Briand

Cardiff

Zoe Thomas
Adam Bowden
Iestyn Harrett
Jenny Manners

GB Juniors

Kate Waugh
Lizzie Hood
Matt Willis
Dan Slater

GB U23

Calum Johnson
Sam Dickinson
Sarah Hodgson
Sian Rainsley

Germany

Peer Sönksen
Gabriel Allgayer
Marie Horn
Nina Eim

Japan

Fuka Sega
Koki Yamamoto
Minami Kubono
Ryousuke Maeda

Leeds I

Georgia Taylor-Brown
Tom Bishop
Jess Learmonth
Jonny Brownlee

Leeds II

Non Stanford
Aaron Royle
Lucy Hall
Gordon Benson

London

Gillian Sanders
India Lee
Anthony Haynes
Luke Penny

Loughborough I

Jodie Stimpson
Sophie Coldwell
Ben Dijkstra
Chris Perham

Loughborough II

Barclay Izzard
James Teagle
Olivia Mathias
Sophie Alden

Nottingham

Libby Coleman
Jimmy Kershaw
Nixie Turner
Connor Bentley

Stirling I

Doug Roberts
Marc Austin
Julie Nimmo
Erin Wallace

Stirling II

Natalie Milne
TBC
Iona Miller
Fergus Roberts

Wales U23

Abbie Williams
Issy Morris
Liam Lloyd
Deri Stewart

SUPPORT THE WORLD'S BEST



Jonny Brownlee | 27 | Leeds I

Jonny Brownlee needs little introduction, his performances speak for themselves. Rio 2016 Olympic Games silver medallist, former world champion and member of the gold medal-winning Team England at the Glasgow 2014 Commonwealth Games in Mixed Relay.



Non Stanford | 28 | Leeds II

Leeds based Non Stanford, narrowly missed out on a medal at the Rio 2016 Olympic Games, but as a former world champion at senior and U23 level, Stanford will be aiming to step onto the podium with her LEEDS II teammates.



Jodie Stimpson | 28 | Loughborough I

Jodie Stimpson recently moved to the Loughborough Performance Centre and is a double Commonwealth Champion, including a member of the winning Team England at the Glasgow 2014 Commonwealth Games in Mixed Relay.



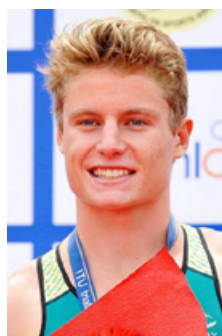
Sophie Coldwell | 22 | Loughborough I

Sophie Coldwell is the local hero. Coldwell, grew up in Keyworth and is now based in Loughborough as part of British Triathlon's UK Sport lottery funded programme.



Joanna Brown | 24 | Canada

Joanna Brown is a regular on the ITU circuit. The Canadian recently finished fourth at 2017 ITU World Triathlon Montreal in a world-class field and will look to continue her run of success this weekend.



Matt Hauser | 19 | Australia

Matt Hauser arrives in Nottingham as a member of the 2017 World Championship winning Australian team and winner of the 2017 Chengdhu ITU Triathlon World Cup.



#MixItUp

with **GO TRI**
SWIM, CYCLE, RUN

ARE YOU LOOKING FOR A NEW WAY TO GET ACTIVE?

Have you been inspired by the success of Leeds' Brownlee boys?

If so, why not TRI and #MixItUp with GO TRI?

To get involved today visit britishtriathlon.org/mixitup



Portland Leisure Centre

TO CITY CENTRE

BREWHOUSE & KITCHEN



- SWIM
1 lap - 300m
- BIKE
2 laps - 7.5km
- RUN
1 lap - 1.5km

- Toilets
- Catering
- Bike Park
- Car Park
- Cross over
- First Aid

- Disabled Parking
- Disabled Viewing
- Turn Around
- Directional Arrow

- Lost Child
- Lost Property
- Big Screen
- Brewhouse & Kitchen

- Spectator Village Toilets
- Spectator Village Catering
- Spectator Village First Aid
- Spectator Village Big Screen

- Free Family Sports Zone
- Badminton
- Cricket
- Golf
- Netball
- Rugby

- Skateboarding
- Skill School
- Table Tennis
- Tennis
- Triathlon Trust
- and more!

- Exhibition Stands
- Aldi
- BMW
- British Triathlon
- Canals & Rivers Trust
- Dinosaurs of China
- Finis/Matisports

- Glasgow 2018
- KitBrix
- P20
- Parklives
- Pedal Cover
- Redbull
- RLSS UK/SH2OUT

- Swimzi
- TFN
- Triathlon England
- Whole Earth